

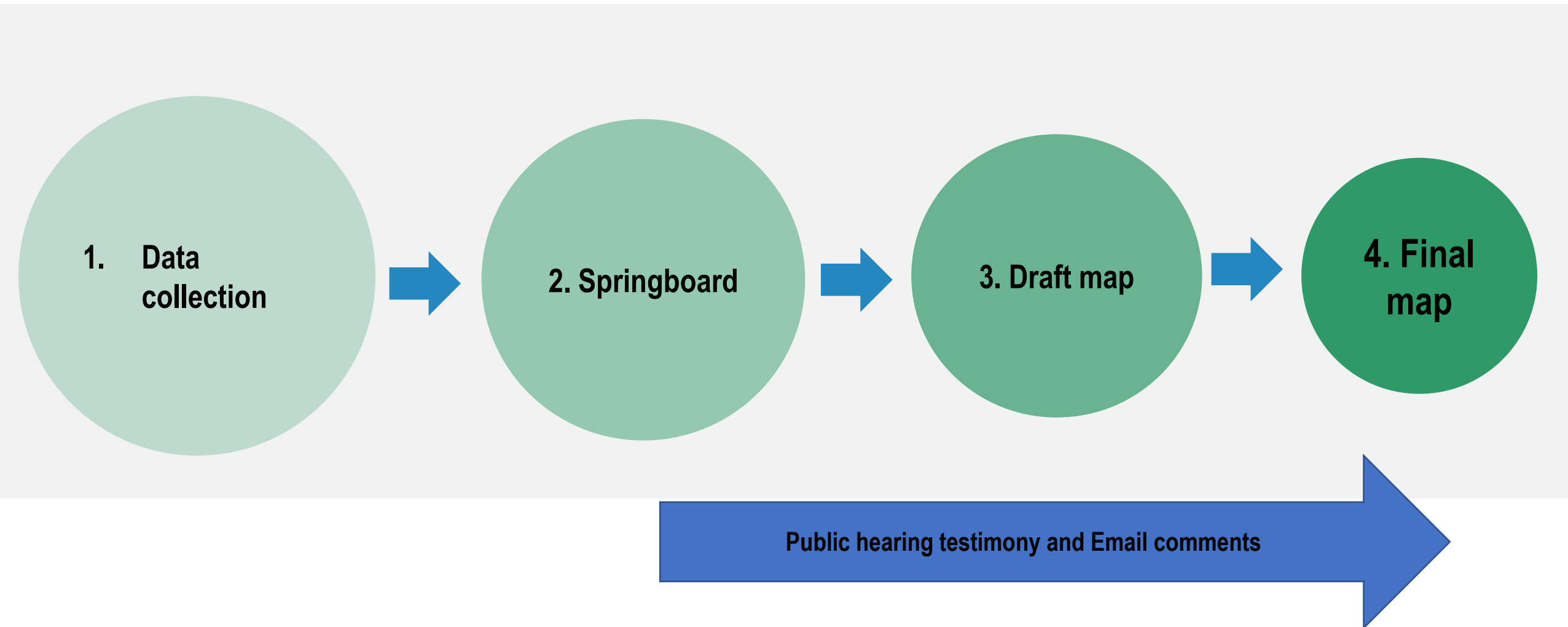
# School Board Redistricting Overview

---

**\*\*Please note this process will NOT affect where a student attends school. This process affects School Board Director Districts ONLY, not attendance areas.\*\***

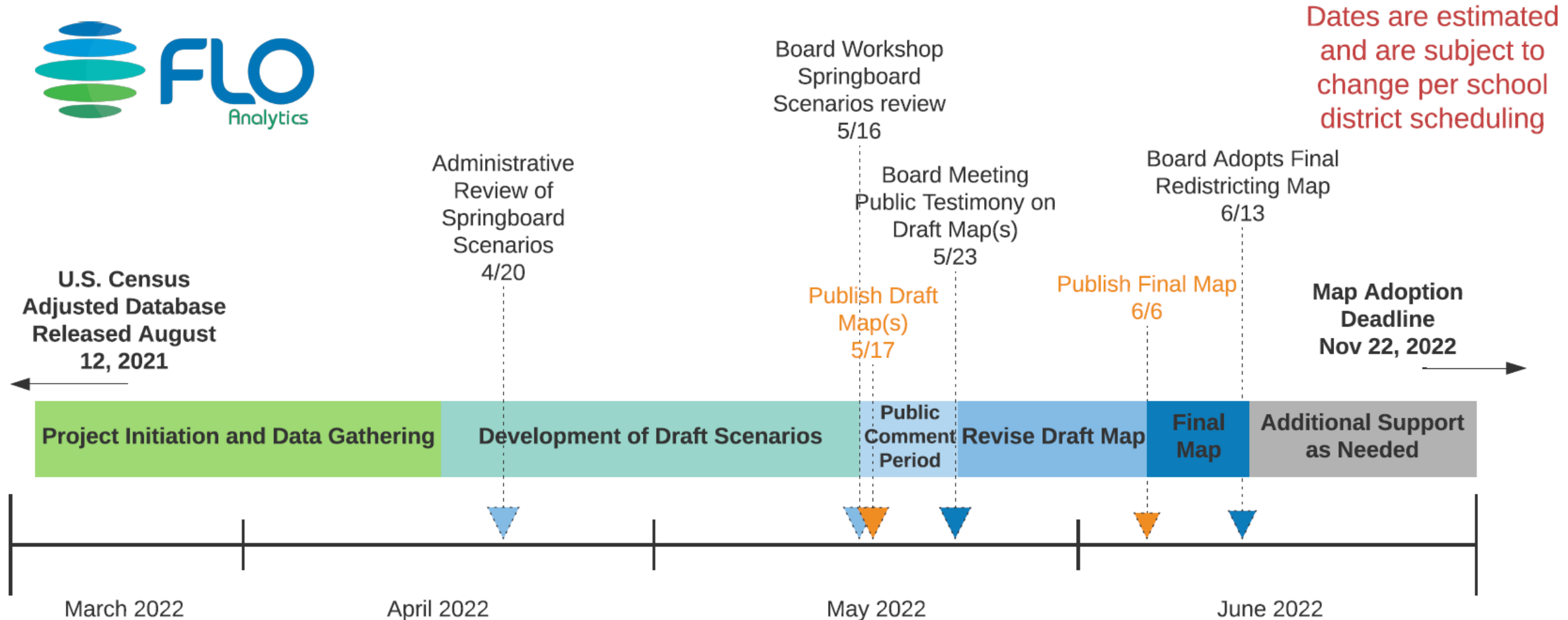


# High-level process flow



**\*\*Please note this process will NOT affect where a student attends school. This process affects School Board Director Districts ONLY, not attendance areas.\*\***

# Redistricting Timeline



**\*\*Please note this process will NOT affect where a student attends school. This process affects School Board Director Districts ONLY, not attendance areas.\*\***

# Redistricting Requirements

---

## REDISTRICTING CRITERIA

- Districts **must** be population balanced
- Districts **must** be contiguous
- Redistricting **must** be drawn in compliance with all local, state, and federal laws including the Federal Voting Rights Act
- Redistricting **must** not be done to favor or disfavor a protected class or political party
- Districts **should** be as compact as possible
- Districts **should** preserve communities of mutual interest
- Districts **should** preserve the use of existing natural boundaries
- District **should not** split census blocks

# Population Balance

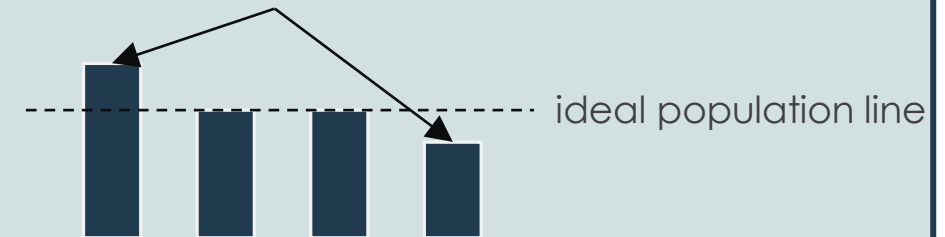
When balancing population, we must consider total population.

This reflects the principle that an elected body represents all residents, not only those who are eligible to vote.

The key metric is deviation range from the “ideal population.”

Ideal population is the total population divided by the number of districts.

Add together the % deviation of the most and least populous districts to determine the deviation range.



Deviation range **must** be below 10%, **should** be below 5%, and always aspire toward 0%.

# Redistricting Criteria

## CONTIGUITY Must

NO



YES



- ✓ No islands
- ✓ Exception: real or jurisdictional islands which then must be functionally connected

## COMPACTNESS Should

NO



YES



- ✓ Districts should not be unnecessarily thin or serpentine
- ✓ Compactness will be measured

## EXISTING OR NATURAL BOUNDARIES Should

YES



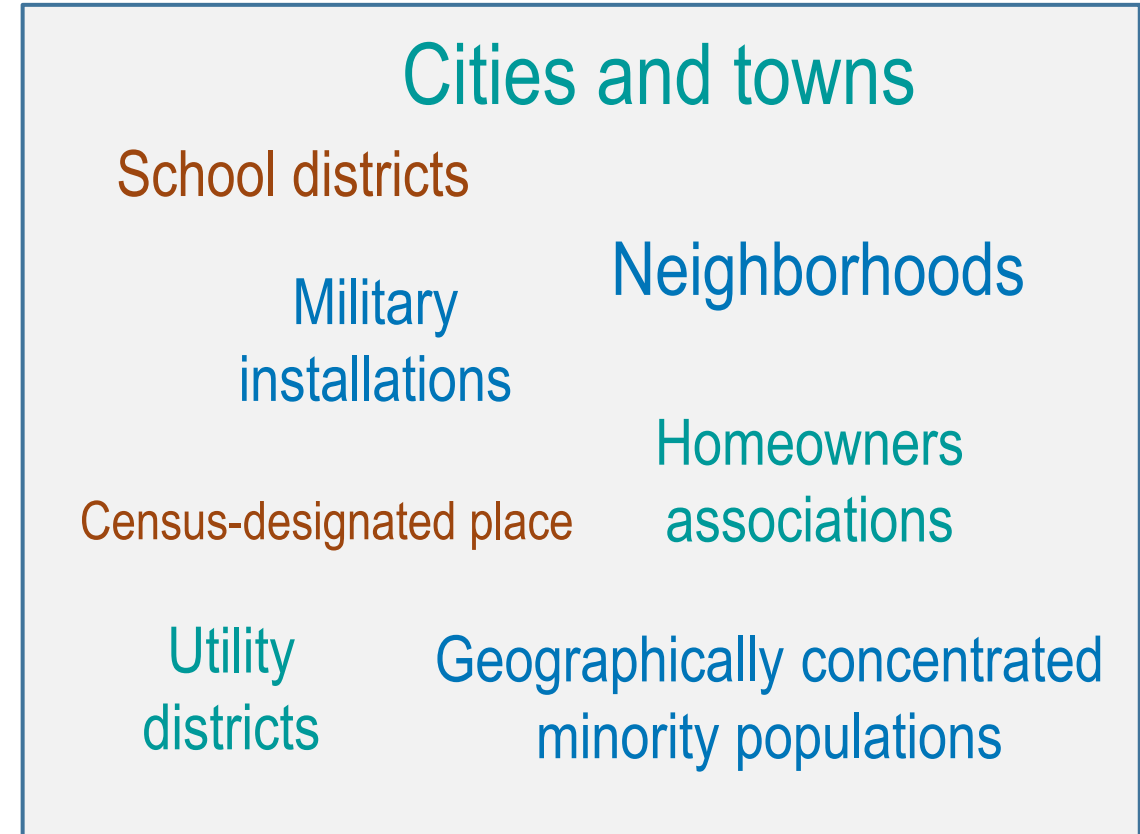
- ✓ Major streets and roads
- ✓ Rivers, lakes, mountains
- ✓ Lines that are already being used as boundaries

# Preserving Communities

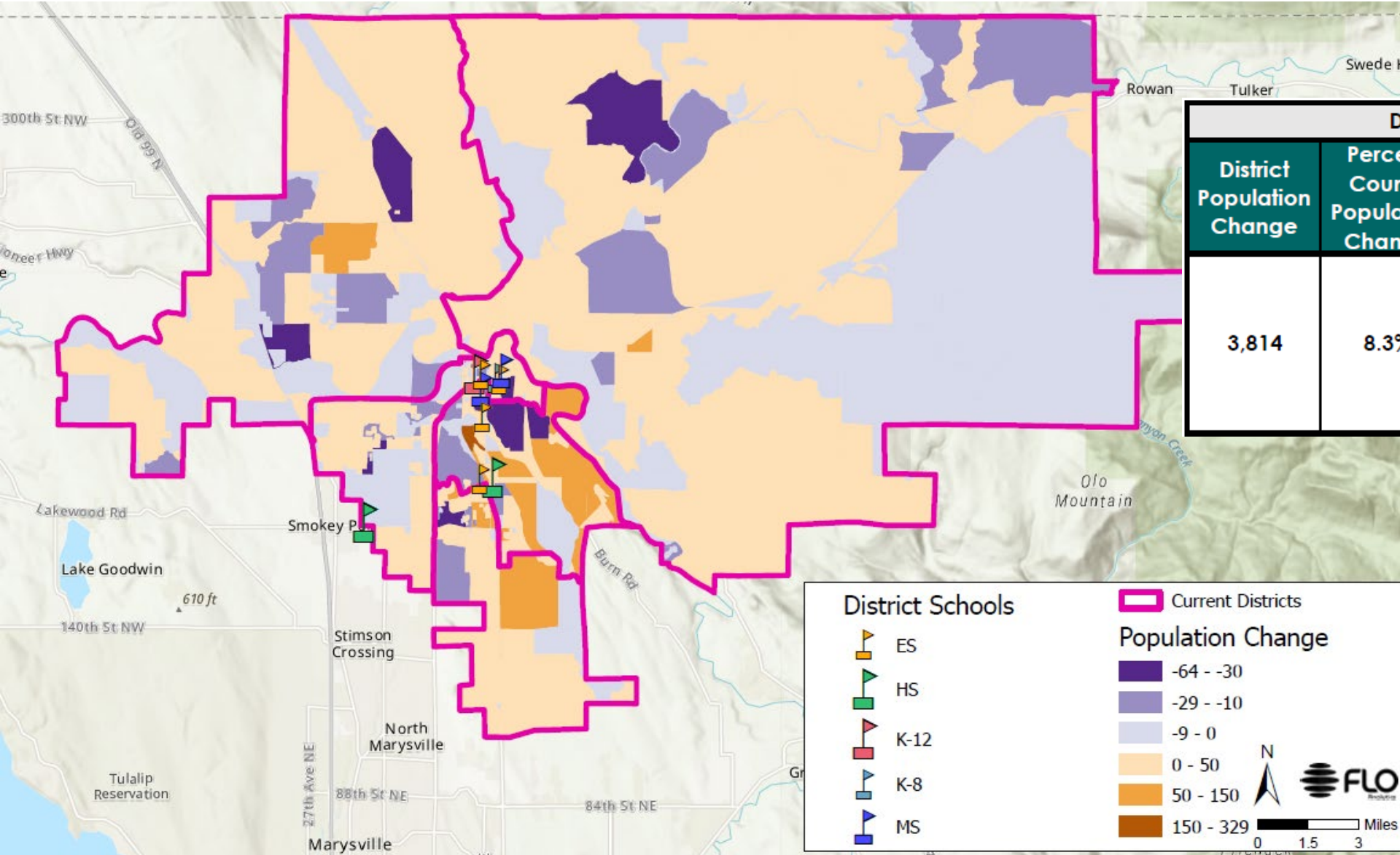
## COMMUNITIES OF MUTUAL INTEREST

A community of interest is a population that shares common social and economic interests that should be included within a single district for purposes of its effective and fair representation. There are no concrete rules on how to define a community of interest.

Redistricting **should** preserve communities.







Difference (2010 vs 2020)				
District Population Change	Percent County Population Change	District	Population Change per District	Percent Population Change per District
3,814	8.3%	1	589	9.9%
		2	445	7.5%
		3	699	11.7%
		4	1,270	21.7%
		5	811	13.5%

- Most growth in District 4
- Steady growth in District 3
- Least growth in District 2

# Population Change 2010-2020

\*\*Please note this process will NOT affect where a student attends school. This process affects School Board Director Districts ONLY, not attendance areas.\*\*





## Total Population & Deviation per District

District	Total Population	Over / Under Ideal	Deviation From Ideal
1	6,531	(179)	(2.7)%
2	6,415	(295)	(4.4)%
3	6,673	(37)	(0.5)%
4	7,126	416	6.2%
5	6,804	94	1.4%

## Equal Population Criterion

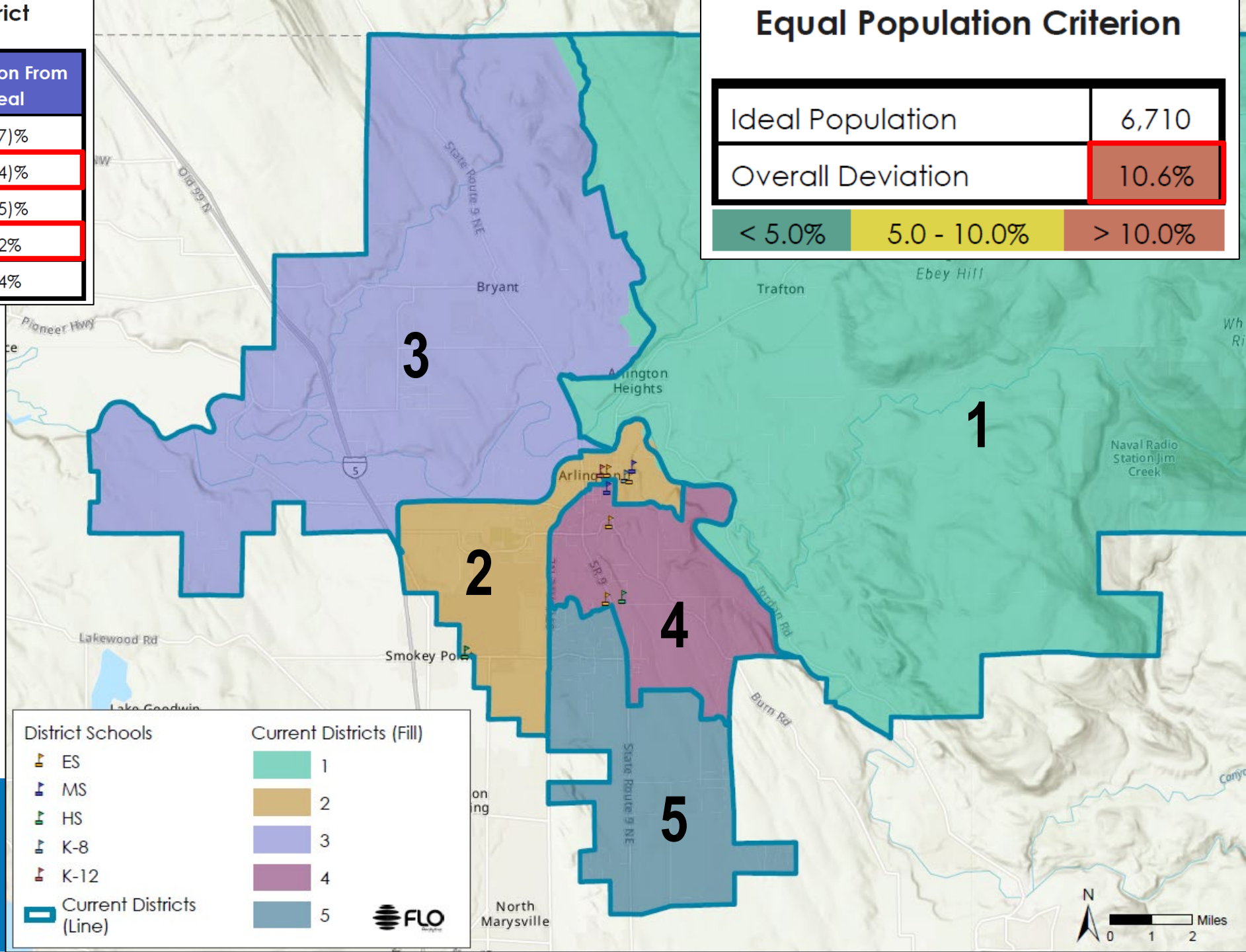
Ideal Population	6,710
Overall Deviation	10.6%
<div>&lt; 5.0%</div> <div>5.0 - 10.0%</div> <div>&gt; 10.0%</div>	

### To get deviation under 5%:

- District 4 needs to cede population
- District 2 needs population added

### To get deviation closer to 0%:

- District 5 needs to cede population
- District 1 needs population added



**\*\*Please note this process will NOT affect where a student attends school. This process affects School Board Director Districts ONLY, not attendance areas.\*\***

---

# Initial Scenarios

## Total Population & Deviation per District

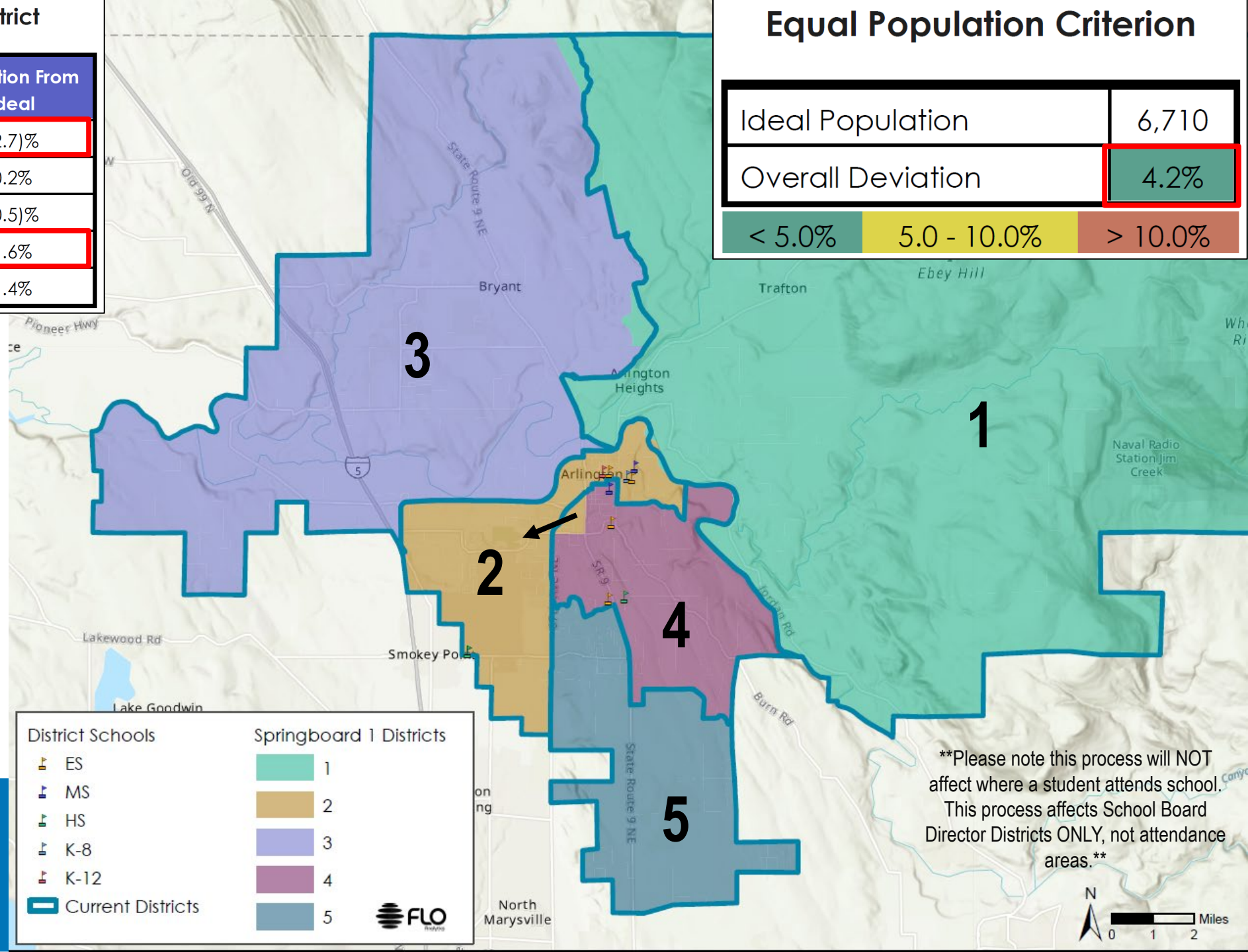
District	Total Population	Over / Under Ideal	Deviation From Ideal
1	6,531	(179)	(2.7)%
2	6,725	15	0.2%
3	6,673	(37)	(0.5)%
4	6,816	106	1.6%
5	6,804	94	1.4%

## Equal Population Criterion

Ideal Population	6,710	
Overall Deviation	4.2%	
< 5.0%	5.0 - 10.0%	> 10.0%

### Considerations:

- Keep Directors in their districts
- Least change
- Deviation under 5%



# Springboard 1

**\*\*Please note this process will NOT affect where a student attends school. This process affects School Board Director Districts ONLY, not attendance areas.\*\***





## Total Population & Deviation per District

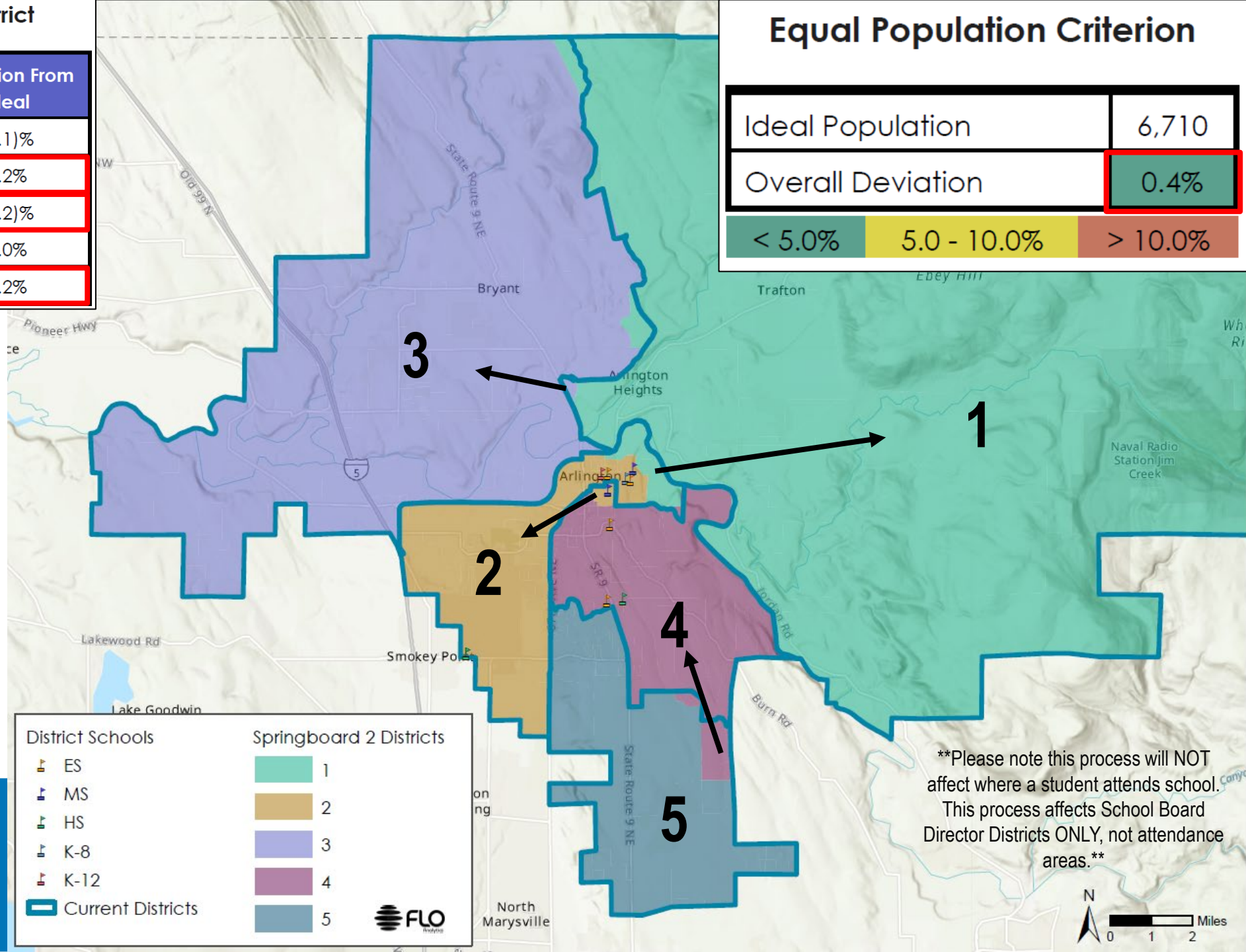
District	Total Population	Over / Under Ideal	Deviation From Ideal
1	6,702	(8)	(0.1)%
2	6,723	13	0.2%
3	6,695	(15)	(0.2)%
4	6,708	(2)	0.0%
5	6,721	11	0.2%

## Equal Population Criterion

Ideal Population	6,710	
Overall Deviation	0.4%	
< 5.0%	5.0 - 10.0%	> 10.0%

### Considerations:

- Lowest deviation with least amount of change
- Keep Directors in their districts
- Follow artificial and natural boundaries



# Springboard 2

**\*\*Please note this process will NOT affect where a student attends school. This process affects School Board Director Districts ONLY, not attendance areas.\*\***

## Total Population & Deviation per District

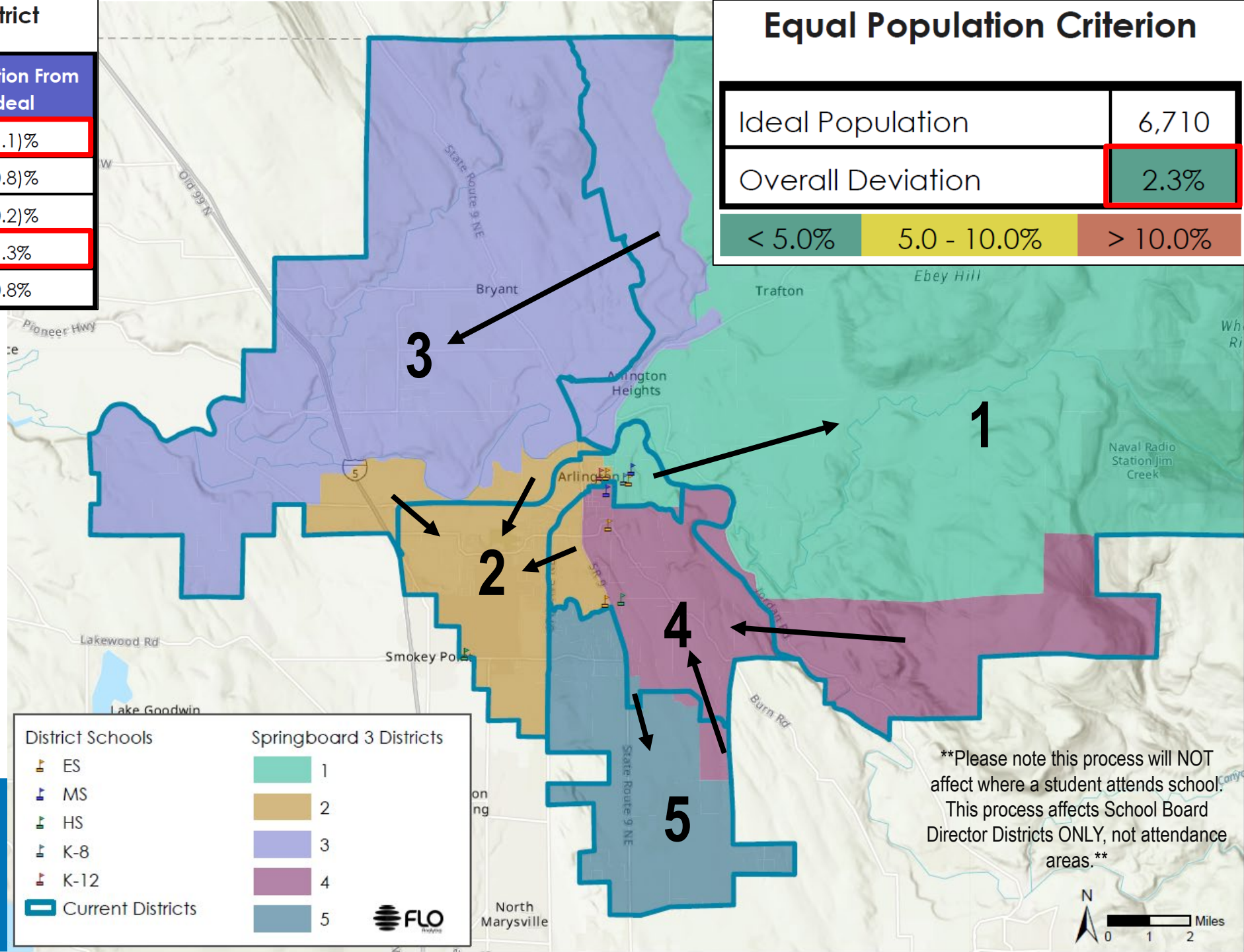
District	Total Population	Over / Under Ideal	Deviation From Ideal
1	6,637	(73)	(1.1)%
2	6,657	(53)	(0.8)%
3	6,699	(11)	(0.2)%
4	6,794	84	1.3%
5	6,762	52	0.8%

## Equal Population Criterion

Ideal Population	6,710	
Overall Deviation	2.3%	
< 5.0%	5.0 - 10.0%	> 10.0%

### Considerations:

- Keep Directors in their districts
- Compactness
- Keeps Tribal Lands together
- Reduces number of split districts for Arlington from 4 to 3



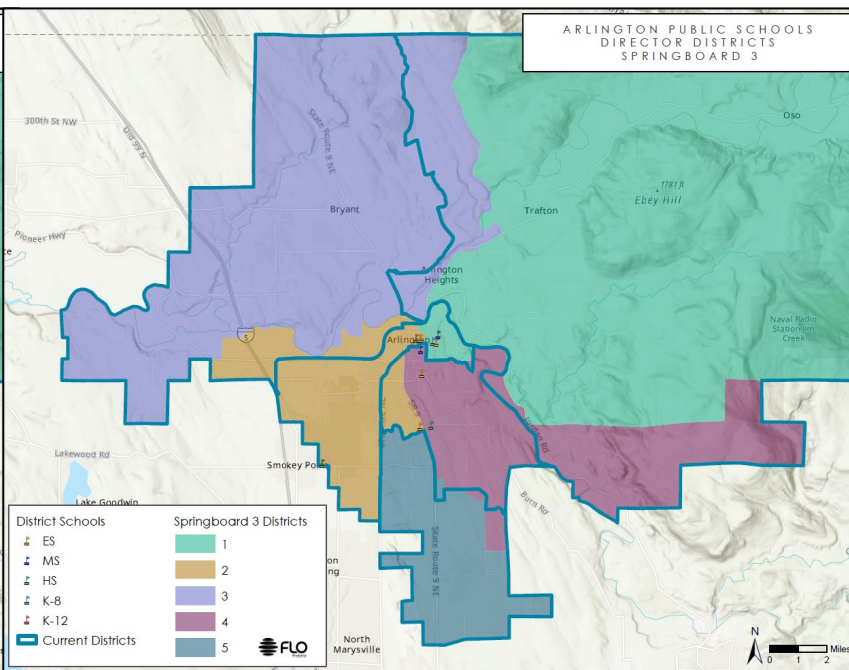
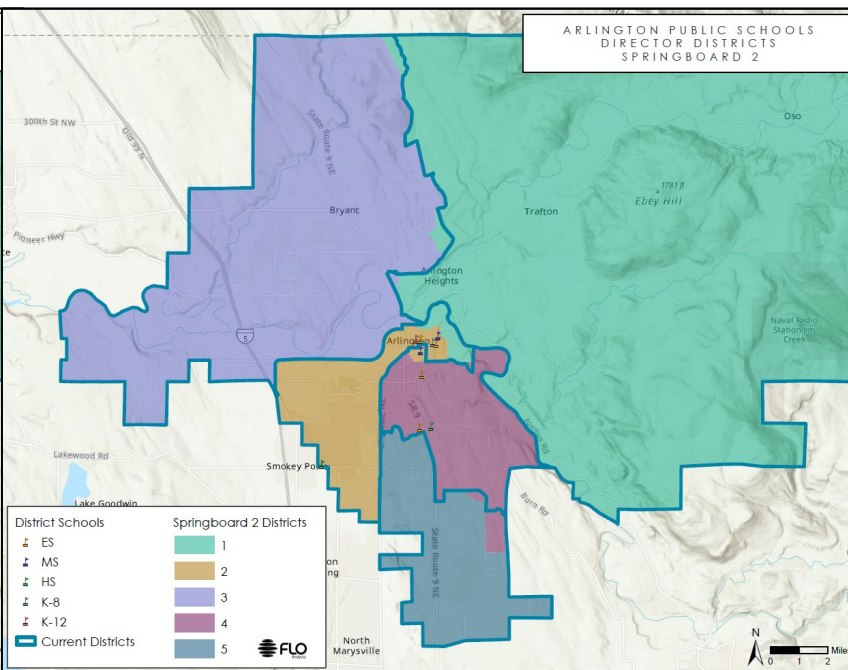
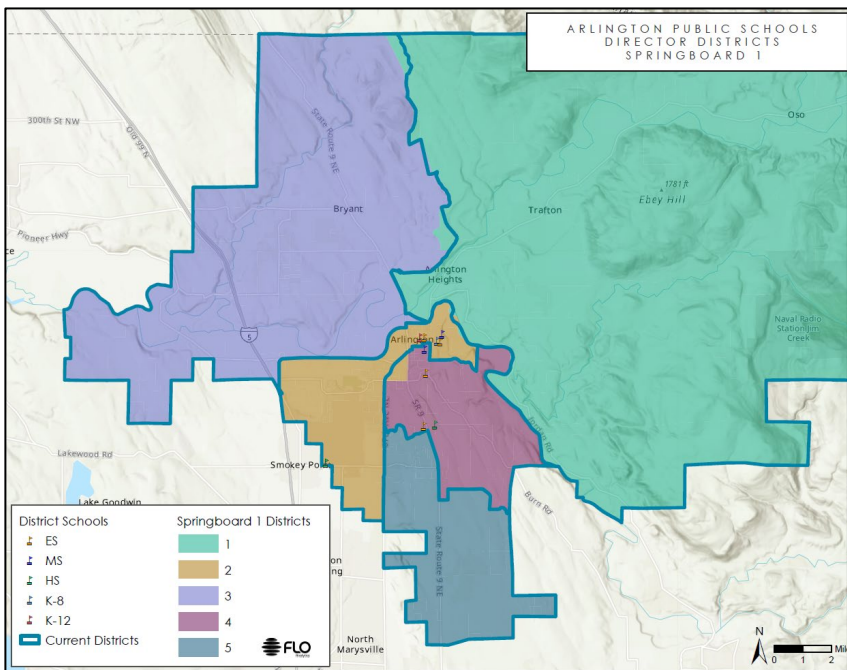
# Springboard 3



# Springboard 1

# Springboard 2

# Springboard 3



## Equal Population Criterion

Ideal Population	6,710	
Overall Deviation	4.2%	
< 5.0%	5.0 - 10.0%	> 10.0%

## Equal Population Criterion

Ideal Population	6,710	
Overall Deviation	0.4%	
< 5.0%	5.0 - 10.0%	> 10.0%

## Equal Population Criterion

Ideal Population	6,710	
Overall Deviation	2.3%	
< 5.0%	5.0 - 10.0%	> 10.0%



---

# Discussion